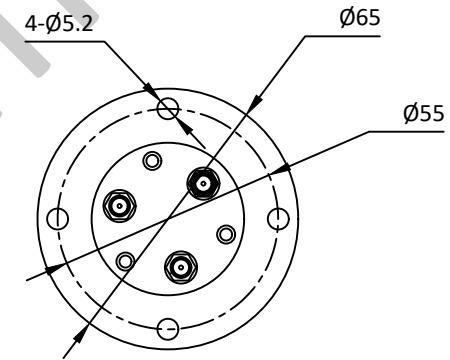
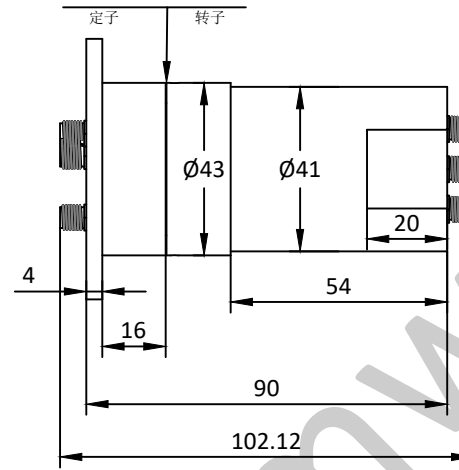
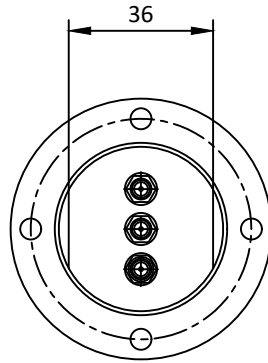


NOTES: UNLESS OTHERWISE SPECIFIED  
THIS IS A CAD GENERATED DRAWING, DO NOT REVISE MANUALLY

REVISION HISTORY					
ZONE	REV	DESCRIPTION	E.C.O.NO	DATE	APPROVED
	1	ENGINEERING RELEASE			



## LRJ-1084

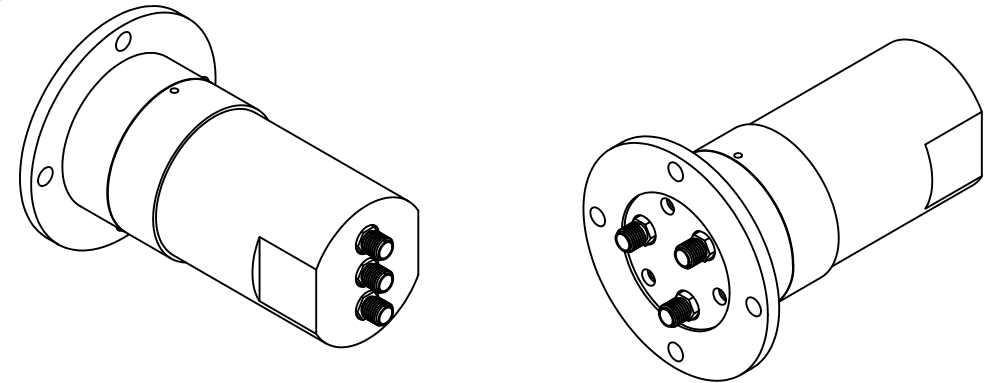
3通道同轴旋转关节 Three Channel Coax Rotary Joint

### —电气技术参数 Electrical Specifications—

通道 Channel:	CH1	CH2	CH3
工作频率 Frequency Range:	DC - 8GHz	DC - 8GHz	DC - 8GHz
插入损耗 Insertion Loss:	0.8dB(Max)	1.2dB(Max)	1.8dB(Max)
插入损耗最大波动值:	0.15dB	0.15dB	0.15dB
电压驻波比 VSWR:	1.5(Max)	1.6(Max)	2.0(Max)
驻波比最大波动值:	0.1	0.15	0.15
耐功率 Power:	50W@-1GHz(CW) 1000W(Peak)	50W@-1GHz(CW) 1000W(Peak)	50W@-1GHz(CW) 1000W(Peak)
工作温度 Operation Temperature:	-40~+70°C		
存储温度 Storage Temperature:	-55~+85°C		
转动速度 Speed:	30rpm(Max)		
寿命 Life:	5*10 <sup>6</sup> 转(Min)		

### —机械技术参数 Mechanical Specification—

接口 Connectors:	SMA-F
样式 Type:	/
重量 Weight:	500g



UNLESS OTHERWISE SPECIFIED DIMENSIONS ARE MILLIMETER TOLERANCES ARE: DECIMALS ANGLES FRACTIONS .XX±0.1 ±1' ±2/5 .XXX±0.012			 www.lairmw.com sales@lairmw.com	P/N: LRJ-1084	
	DRWN	DATE		THREE CHANNEL COAX ROTARY JOINT 3通道同轴旋转关节	
HOLE DIAMETER .35 TO 3.20 3.21 TO 6.35 6.36 TO 12.70 12.71 TO 19.05 19.06 TO 25.40 25.41 TO 50.80	TOLERANCES +.05/-02 +.10/-03 +.15/-03 +.20/-03 +.25/-03 +.30/-03	ENG	CHK	Q.A.	APPROVED
SIZE A3			CAGE NO.	DWG NO.	REV 1
SCALE 3:2			UNIT mm	SHEET 1 OF 1	