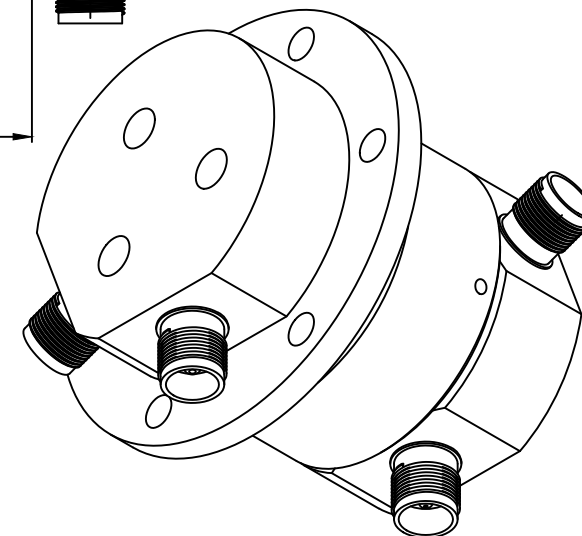
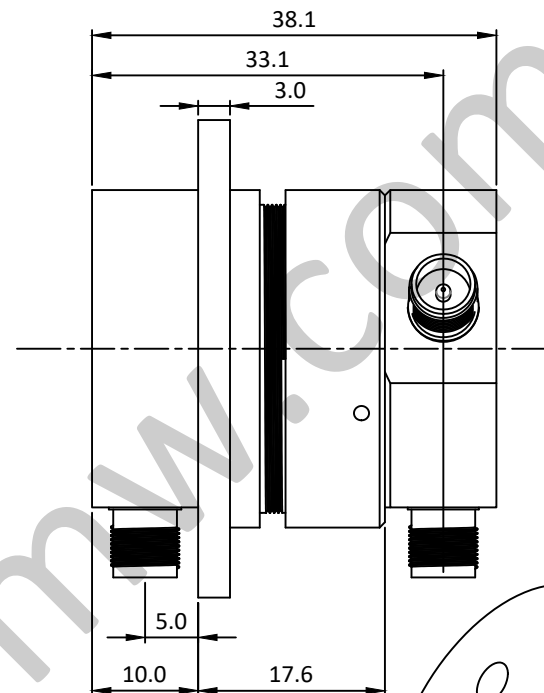
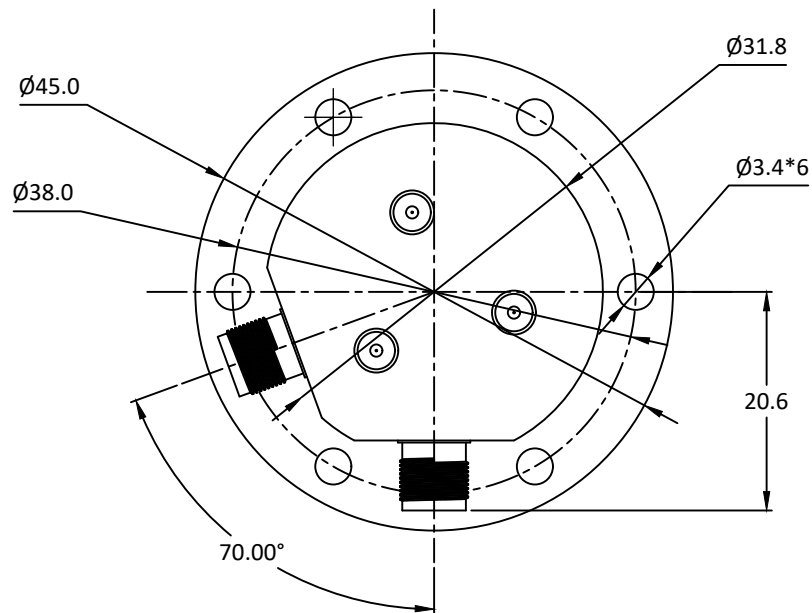


NOTES: UNLESS OTHERWISE SPECIFIED
THIS IS A CAD GENERATED DRAWING, DO NOT REVISE MANUALLY

REVISION HISTORY					
ZONE	REV	DESCRIPTION	E.C.O.NO	DATE	APPROVED
	1	ENGINEERING RELEASE			



LRJ-1021

双通道旋转关节 Dual Channel Rotary Joint

—电气技术参数 Electrical Specifications—

通道 Channel:	CH1	CH2
工作频率 Frequency Range:	DC - 4.5GHz	DC - 4.5GHz
插入损耗 Insertion Loss:	1.0dB(Max)	1.0dB(Max)
插入损耗最大波动值:	0.06dB	0.4dB
电压驻波比 VSWR:	1.5(Max)	2.0(Max)
驻波比最大波动值:	0.1	0.5
耐功率 Power:	100W@DC-2GHz/60W@2-4.5GHz(CW)	10W(CW)
	1kW(Peak)	1kW(Peak)
工作温度 Operation Temperature:	-40~+70°C	
存储温度 Storage Temperature:	-55~+70°C	
转动速度 Speed:	30rpm(Max)	
寿命 Life:	5*10 ⁶ 转(Min)	

—机械技术参数 Mechanical Specification—

接口 Connectors:	SMA-F
样式 Type:	U
重量 Weight:	130g

UNLESS OTHERWISE SPECIFIED DIMENSIONS ARE MILLIMETER TOLERANCES ARE: DECIMALS ANGLES FRACTIONS .XX±0.03 ±1' ±2/5 .XXX±0.012		莱尔微波 www.lairmw.com sales@lairmw.com		P/N: LRJ-1021			
		Approvals	DATE	DUAL CHANNEL COAX ROTARY JOINT 双通道同轴旋转关节			
HOLE DIAMETER .35 TO 3.20 3.21 TO 6.35 6.36 TO 12.70 12.71 TO 19.05 19.06 TO 25.40 25.41 TO 50.80	TOLERANCES +.05/-02 +.10/-03 +.15/-03 +.20/-03 +.25/-03 +.30/-03	DRWN		SIZE A3	CAGE NO	DWG NO.	REV 1
		ENG		SCALE 3:2	UNIT mm	SHEET 1 OF 1	
		CHK					
		Q.A.					