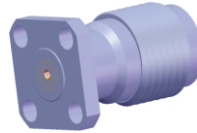
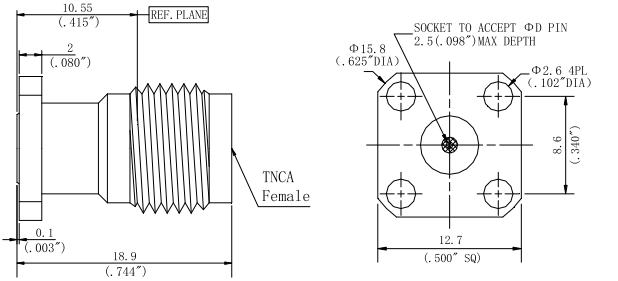
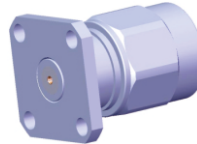
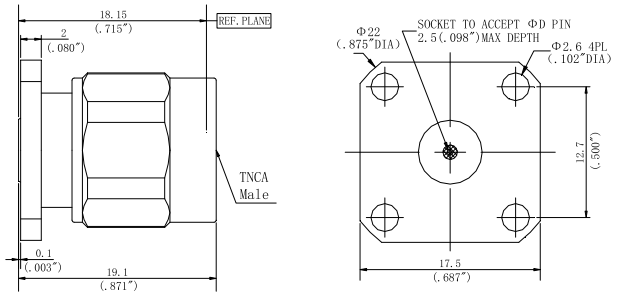


型号	插孔直径 ϕD
LTAFS46F09	0.46mm/0.018"
LTAFS51F09	0.51mm/0.020"
LTAFS91F09	0.91mm/0.036"



型号	插孔直径 ϕD
LTAFS46F01	0.46mm/0.018"
LTAFS51F01	0.51mm/0.020"
LTAFS91F01	0.91mm/0.036"



型号	插孔直径 ϕD
LTAMS46F09	0.46mm/0.018"
LTAFM51F09	0.51mm/0.020"
LTAFM91F09	0.91mm/0.036"