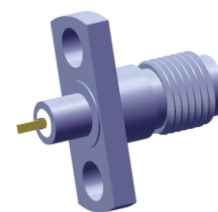
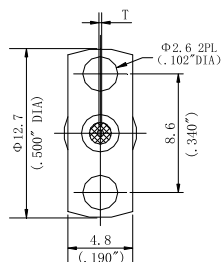
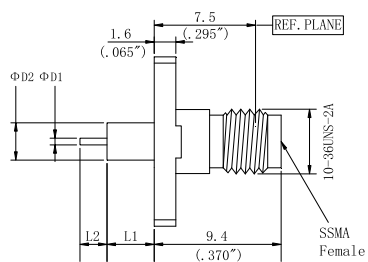
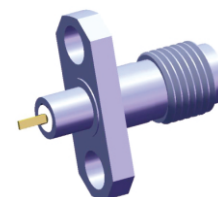
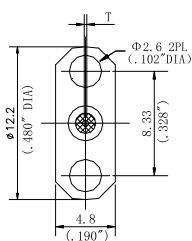
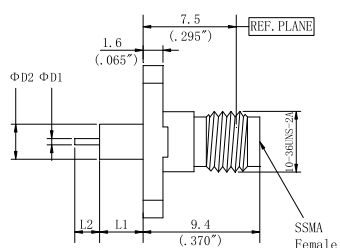


型号	ΦD1	ΦD2	L1	L2	T	对应图
L2SFM0616F07	0.6mm/0.024"	2.8mm/0.110"	3.1mm/0.122"	2mm/0.079"	0.2mm/0.008"	图 1
L2SFM0616F07C	0.6mm/0.024"	2.8mm/0.110"	3.1mm/0.122"	2mm/0.079"	0.2mm/0.008"	图 2



型号	ΦD1	ΦD2	L1	L2	T	对应图
L2SFM0616F08	0.6mm/0.024"	2.8mm/0.110"	3.1mm/0.122"	2mm/0.079"	0.2mm/0.008"	图 1
L2SFM0616F08C	0.6mm/0.024"	2.8mm/0.110"	3.1mm/0.122"	2mm/0.079"	0.2mm/0.008"	图 2



型号	ΦD1	ΦD2	L1	L2	T
L2SFM0616F02	0.6mm/0.024"	2.8mm/0.110"	3.1mm/0.122"	2mm/0.079"	0.2mm/0.008"

