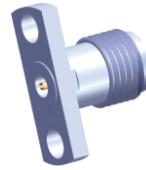
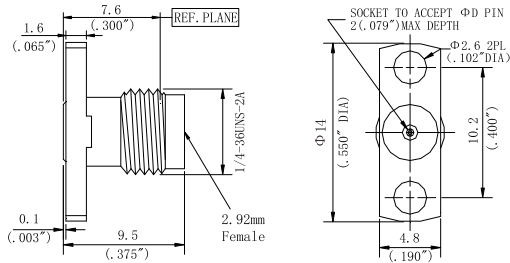
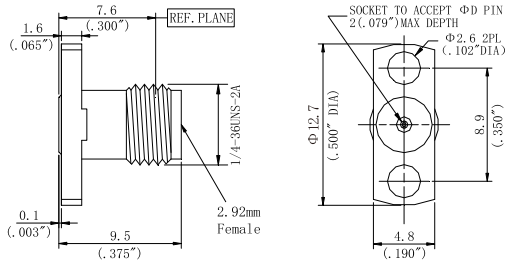


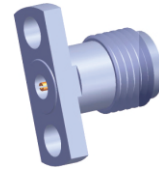
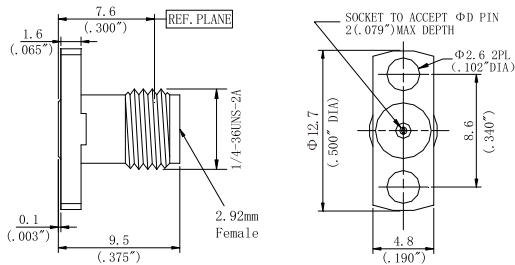
| 型号 | 插孔直径 ΦD |
|------------|---------------|
| L29FS23F04 | 0.23mm/0.009" |
| L29FS30F04 | 0.30mm/0.012" |
| L29FS38F04 | 0.38mm/0.015" |
| L29FS46F04 | 0.46mm/0.018" |
| L29FS51F04 | 0.51mm/0.020" |



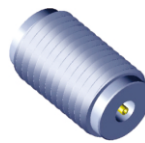
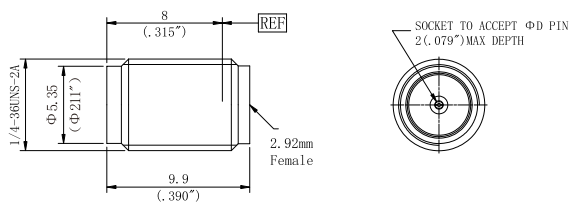
| 型号 | 插孔直径 ΦD |
|------------|---------------|
| L29FS23F05 | 0.23mm/0.009" |
| L29FS30F05 | 0.30mm/0.012" |
| L29FS38F05 | 0.38mm/0.015" |
| L29FS46F05 | 0.46mm/0.018" |
| L29FS51F05 | 0.51mm/0.020" |



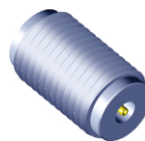
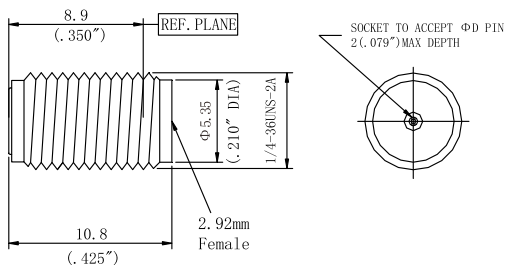
| 型号 | 插孔直径 ΦD |
|------------|---------------|
| L29FS23F06 | 0.23mm/0.009" |
| L29FS30F06 | 0.30mm/0.012" |
| L29FS38F06 | 0.38mm/0.015" |
| L29FS46F06 | 0.46mm/0.018" |
| L29FS51F06 | 0.51mm/0.020" |



| 型号 | 插孔直径 ΦD |
|------------|---------------|
| L29FS23F07 | 0.23mm/0.009" |
| L29FS30F07 | 0.30mm/0.012" |
| L29FS38F07 | 0.38mm/0.015" |
| L29FS46F07 | 0.46mm/0.018" |
| L29FS51F07 | 0.51mm/0.020" |



| 型号 | 插孔直径 ΦD |
|------------|---------------|
| L29FS23Y01 | 0.23mm/0.009" |
| L29FS30Y01 | 0.30mm/0.012" |
| L29FS38Y01 | 0.38mm/0.015" |
| L29FS46Y01 | 0.46mm/0.018" |
| L29FS51Y01 | 0.51mm/0.020" |



| 型号 | 插孔直径 ΦD |
|------------|---------------|
| L29FS23Y02 | 0.23mm/0.009" |
| L29FS30Y02 | 0.30mm/0.012" |
| L29FS38Y02 | 0.38mm/0.015" |
| L29FS46Y02 | 0.46mm/0.018" |
| L29FS51Y02 | 0.51mm/0.020" |