

NOTES:UNLESS OTHERWISE SPECIFIED
THIS IS A CAD GENERATED DRAWING,DO NOT REVISE MANUALLY

REVISION HISTORY					
ZONE	REV	DESCRIPTION	E.C.O.NO	DATE	APPROVED
	1	ENGINEERING RELEASE			

真值表 Truth Table

TTL 高电平 (5Vdc/≤0.5mA)	J0-J1	J0-J2	J0-J3	J0-J4	J0-J5	J0-J6	J0-J7	J0-J8
C1 TTL 高电平	ON	OFF	OFF	OFF	OFF	OFF	OFF	OFF
C2 TTL 高电平	OFF	ON	OFF	OFF	OFF	OFF	OFF	OFF
C3 TTL 高电平	OFF	OFF	ON	OFF	OFF	OFF	OFF	OFF
C4 TTL 高电平	OFF	OFF	OFF	ON	OFF	OFF	OFF	OFF
C5 TTL 高电平	OFF	OFF	OFF	OFF	ON	OFF	OFF	OFF
C6 TTL 高电平	OFF	OFF	OFF	OFF	OFF	ON	OFF	OFF
C7 TTL 高电平	OFF	OFF	OFF	OFF	OFF	OFF	ON	OFF
C8 TTL 高电平	OFF	OFF	OFF	OFF	OFF	OFF	OFF	ON

端口定义 Pin Definition

端口编号	端口定义
+5V	工作正电压
GND	模块地
C1-C8	TTL 控制端

LES-1002

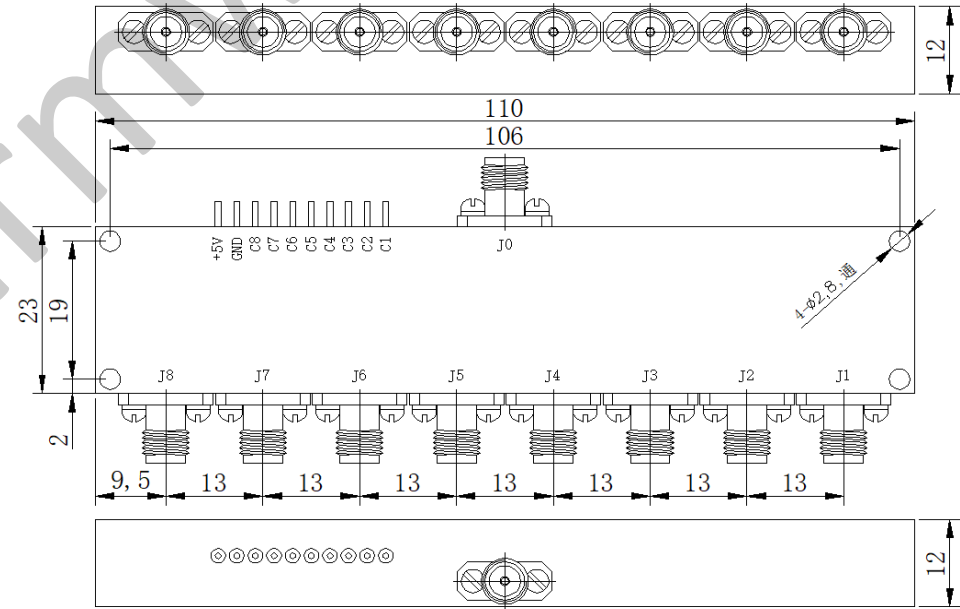
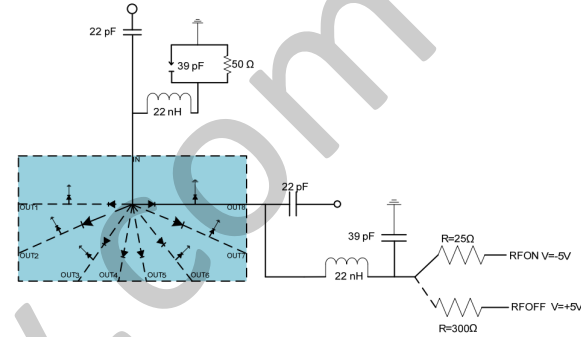
0.1 - 40GHz 单刀八掷电子开关 SP8T Switch
—电气技术参数 Electrical Specifications—

频率范围 Frequency Range:	0.1 - 40GHz
隔离度 Isolation:	≥50dB
插入损耗 Insertion Loss:	≤10dB
驻波 VSWR:	≤1.9
开关速度 Switching Speed:	≤100ns
传输阻抗 Impedance:	50Ω
承载功率 Carrying power:	23dBm
控制方式 Control Mode:	TTL(详见真值表)
直流偏置电压 DC Supply Voltage:	+5V
直流偏置电流 DC Supply Current:	≤250mA(DC)@20°C
工作温度 Operation Temperature:	-40 ~ +85°C
存储温度 Storage Temperature:	-55 ~ +125°C

—机械技术参数 Mechanical Specification—

输入连接器 Input Interface:	2.92mm-F
输出连接器 Output Interface:	2.92mm-F
控制接口 Control Interface:	接线柱
重量 Weight:	≤120g

驱动示意图 Drive Diagram



(单位: mm, 外形公差: -0.1mm, 其余公差: ±0.1mm)

UNLESS OTHERWISE SPECIFIED DIMENSIONS ARE MILLIMETER TOLERANCES ARE: DECIMALS ANGLES FRACTIONS .X±0.1 ±1' ±2/5 .XX±0.03 .XXX±0.012						P/N: LES-1002	
HOLE DIAMETER .35 TO 3.20 3.21 TO 6.35 6.36 TO 12.70 12.71 TO 19.05 19.06 TO 25.40 25.41 TO 50.80		TOLERANCES +.05/- .02 +.10/- .03 +.15/- .03 +.20/- .03 +.25/- .03 +.30/- .03		Approvals DATE DRWN 24/9/5 ENG CHK Q.A.		www.lairmw.com sales@lairmw.com 0.1-40GHz单刀八掷电子开关SP8T Switch	
SCALE 3:2		UNIT mm		SIZE A3		CAGE NO.	
SHEET 1 OF 1		DWG NO.		REV 1			