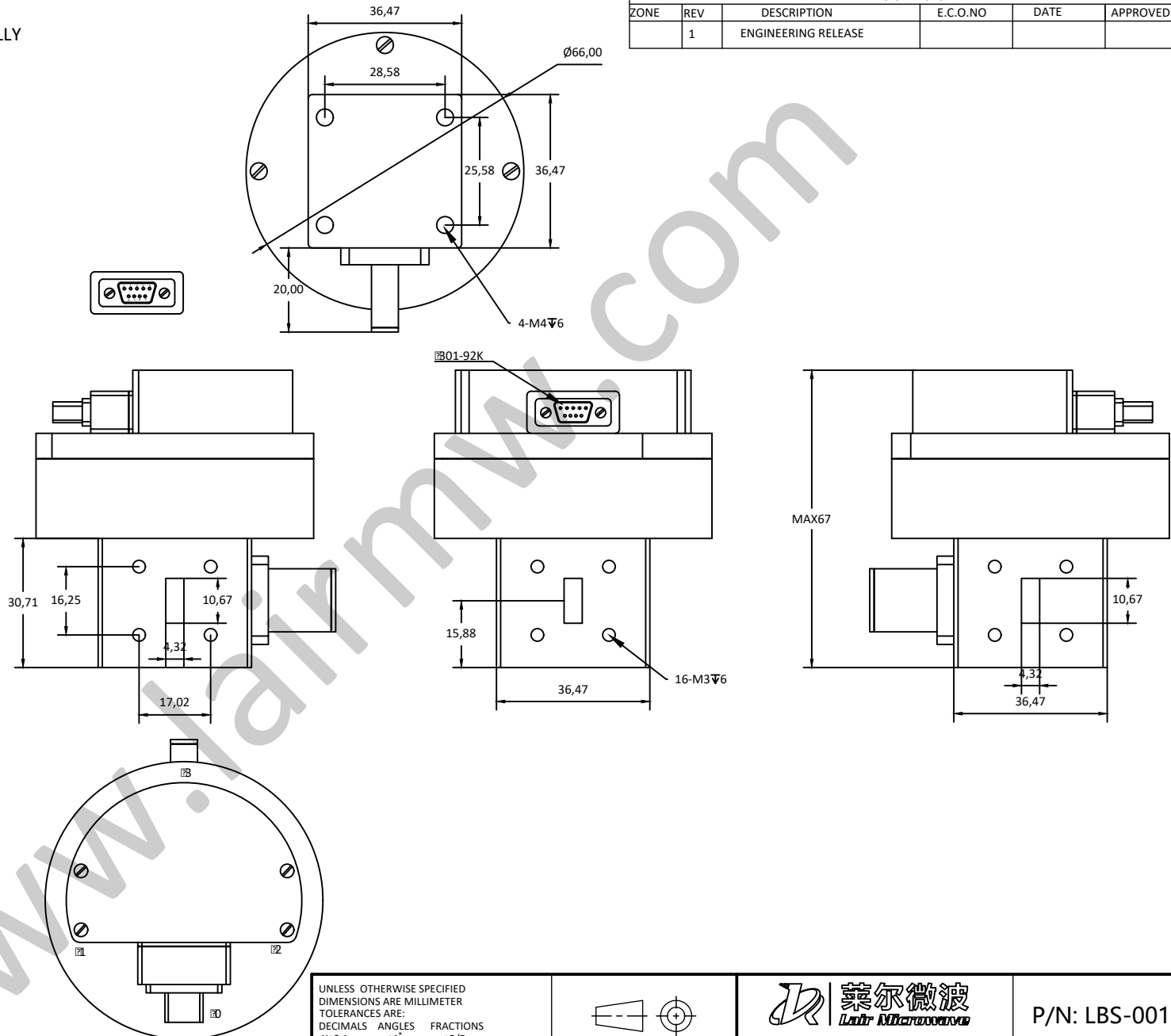


NOTES:UNLESS OTHERWISE SPECIFIED
THIS IS A CAD GENERATED DRAWING,DO NOT REVISE MANUALLY

REVISION HISTORY					
ZONE	REV	DESCRIPTION	E.C.O.NO	DATE	APPROVED
	1	ENGINEERING RELEASE			

J30J-9ZK Pin Definition

Pin#	Definition	Description
1	18V~27V	当 1 接 18V~27V, 持续时间 120±20ms 时, 开关处于状态 I (J0-J1、J2-J3 导通)
2	GND	
3	18V~27V	当 3 接 18V~27V, 持续时间 120±20ms 时, 开关处于状态 II (J0-J2、J1-J3 导通)
4	空	
5	空	
6	微动开关	开关状态信号, 开关处于状态 I 时, 6 和 7 导通
7	微动开关	
8	微动开关	开关状态信号, 开关处于状态 II 时, 8 和 9 导通
9	微动开关	



LBS-0011

17.6 - 26.7GHz 双刀双掷波导开关 DPDT Waveguide Switch
—电气技术参数Electrical Specifications—

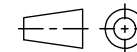
频率范围 Frequency Range:	17.6-26.7GHz
隔离度 Isolation:	≥ 70 dB
插入损耗 Insertion Loss:	≤ 0.3 dB
驻波 VSWR:	≤ 1.15
切换时间 Switching Time:	≤ 120 ms
直流偏置电压 DC Supply Voltage:	18V~27V
直流偏置电流 DC Supply Current:	≤ 2
工作温度 Operation Temperature:	$-40 \sim +85$ °C
存储温度 Storage Temperature:	$-55 \sim +80$ °C

—机械技术参数Mechanical Specification—

法兰接口 Flange Interface:	FBP220
控制接口 Control Interface:	J30J-9ZK

UNLESS OTHERWISE SPECIFIED
DIMENSIONS ARE MILLIMETER
TOLERANCES ARE:
DECIMALS ANGLES FRACTIONS
.XX±0.03 ±1' ±2/5
.XXX±0.012

HOLE DIAMETER	TOLERANCES
.35 TO 3.20	+.05/- .02
3.21 TO 6.35	+.10/- .03
6.36 TO 12.70	+.15/- .03
12.71 TO 19.05	+.20/- .03
19.06 TO 25.40	+.25/- .03
25.41 TO 50.80	+.30/- .03



Approvals

DATE

DRWN

ENG

CHK

Q.A.



www.lairmw.com sales@lairmw.com

P/N: LBS-0011

17.6-26.7GHz 双刀双掷波导开关
DPDT Waveguide Switch

SIZE	CAGE NO	DWG NO.	REV
A3			1
SCALE	UNIT	SHEET 1 OF 1	
3:2	mm		