

NOTES:UNLESS OTHERWISE SPECIFIED
THIS IS A CAD GENERATED DRAWING,DO NOT REVISE MANUALLY

REVISION HISTORY					
ZONE	REV	DESCRIPTION	E.C.O.NO	DATE	APPROVED
	1	ENGINEERING RELEASE			

LAP-5109

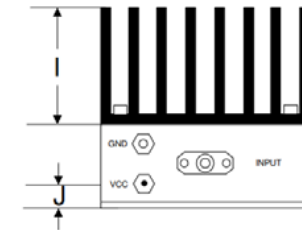
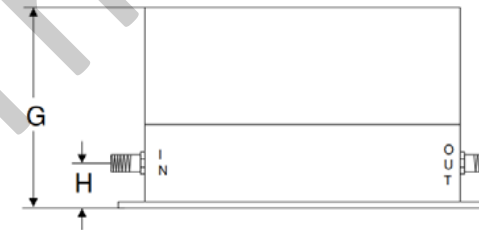
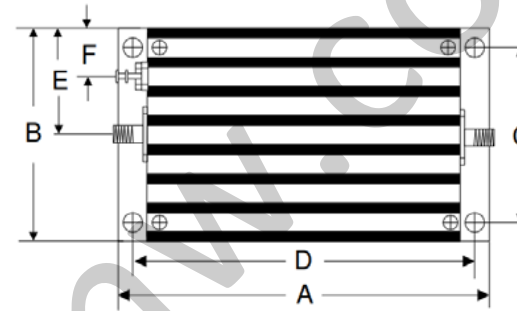
750 – 1150 MHz 功率放大器 Power Amplifier

—电气技术参数 Electrical Specifications—

频率范围 Frequency Range:	750 – 1150 MHz
增益 Gain:	28dB
输出 P _{1dB} Output P _{1dB} :	+30dBm
输出功率三阶截断点 OIP ₃ :	+40dBm
输入驻波比 Input VSWR:	2.3:1
输出驻波比 Output VSWR:	1.5:1
直流偏置电压 DC Supply Voltage:	+10 ~ +15 V
直流偏置电流 DC Supply Current:	1000mA
工作温度 Operation Temperature:	-30 ~ +65°C
存储温度 Storage Temperature:	-55 ~ +100°C

—机械技术参数 Mechanical Specifications—

输入连接器 Input Interface:	SMA-F
输出连接器 Output Interface:	SMA-F
尺寸 Size (excluding connectors):	/
重量 Weight:	/



	A	B	C	D	E	F	G	H	I	J
Inch	3.750	2.000	1.750	3.400	1.000	0.400	1.813	0.375	1.000	0.238
mm	92.25	50.80	44.45	86.36	25.40	10.16	46.05	9.53	25.40	6.03

UNLESS OTHERWISE SPECIFIED DIMENSIONS ARE MILLIMETER TOLERANCES ARE: DECIMALS ANGLES FRACTIONS .XX±0.03 ±1' ±2/5 .XXX±0.012		www.lairmw.com sales@lairmw.com		P/N: LAP-5109							
		Approvals	DATE	750 - 1150MHz 功率放大器 Power Amplifier 增益 Gain 28dB							
HOLE DIAMETER .35 TO 3.20 3.21 TO 6.35 6.36 TO 12.70 12.71 TO 19.05 19.06 TO 25.40 25.41 TO 50.80	TOLERANCES +.05/- .02 +.10/- .03 +.15/- .03 +.20/- .03 +.25/- .03 +.30/- .03	DRWN		SIZE	A3	CAGE NO		DWG NO.		REV	1
		ENG		SCALE	3:2	UNIT	mm	SHEET 1 OF 1			
		CHK									
		Q.A.									