

NOTES:UNLESSOTHERWISE SPECIFIED
THIS IS A CAD GENERATED DRAWING,DO NOT REVISE MANUALLY

REVISION HISTORY					
ZONE	REV	DESCRIPTION	E.C.O.NO	DATE	APPROVED
	1	ENGINEERING RELEASE			

LAP-5098

20 – 1000 MHz 功率放大器 Power Amplifier

—电气技术参数 Electrical Specifications—

频率范围 Frequency Range: 20 – 1000 MHz

增益 Gain: 40dB

输出 P_{1dB} Output P_{1dB}: +30dBm

输出功率三阶截断点 OIP₃: +47dBm

输入驻波比 Input VSWR: 1.5:1

输出驻波比 Output VSWR: 1.5:1

直流偏置电压 DC Supply Voltage: +24 V

直流偏置电流 DC Supply Current: 630mA

工作温度 Operation Temperature: -40 ~ +85°C

存储温度 Storage Temperature: -55 ~ +125°C

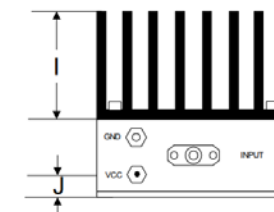
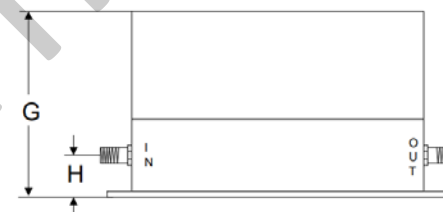
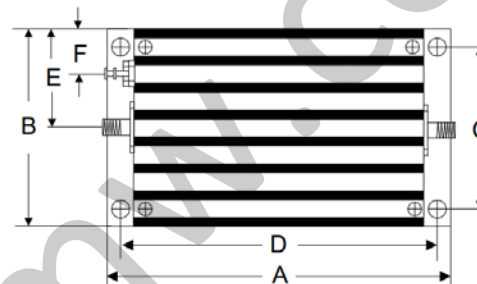
—机械技术参数 Mechanical Specifications—

输入连接器 Input Interface: SMA-F

输出连接器 Output Interface: SMA-F

尺寸 Size (excluding connectors): /

重量 Weight: /



	A	B	C	D	E	F	G	H	I	J
Inch	3.750	2.000	1.750	3.400	1.000	0.400	1.913	0.375	1.000	0.238
mm	92.25	50.80	44.45	86.36	25.40	10.16	48.59	9.53	25.40	6.03

UNLESS OTHERWISE SPECIFIED DIMENSIONS ARE MILLIMETER TOLERANCES ARE: DECIMALS ANGLES FRACTIONS .XX±0.03 ±1' ±2/5 .XXX±0.012					P/N: LAP-5098		
			www.lairmw.com sales@lairmw.com		20 - 1000MHz 功率放大器 Power Amplifier 增益 Gain 40dB		
HOLE DIAMETER .35 TO 3.20 3.21 TO 6.35 6.36 TO 12.70 12.71 TO 19.05 19.06 TO 25.40 25.41 TO 50.80	TOLERANCES +.05/- .02 +.10/- .03 +.15/- .03 +.20/- .03 +.25/- .03 +.30/- .03	DRWN	DATE	SIZE A3	CAGE NO	DWG NO.	REV 1
		ENG		SCALE 3:2	UNIT mm	SHEET 1 OF 1	
		CHK					
		Q.A.					