

NOTES:UNLESSOTHERWISE SPECIFIED
THIS IS A CAD GENERATED DRAWING,DO NOT REVISE MANUALLY

REVISION HISTORY					
ZONE	REV	DESCRIPTION	E.C.O.NO	DATE	APPROVED
	1	ENGINEERING RELEASE			

LAP-5050

30 – 700 MHz 功率放大器 Power Amplifier

—电气技术参数 Electrical Specifications—

频率范围 Frequency Range: 30 – 700 MHz

增益 Gain: 30dB

输出 P_{1dB} Output P_{1dB} : +20dBm

输出功率三阶截断点 OIP3: +33dBm

输入驻波比 Input VSWR: 2.0:1

输出驻波比 Output VSWR: 1.3:1

直流偏置电压 DC Supply Voltage: +5 V

直流偏置电流 DC Supply Current: 100mA

工作温度 Operation Temperature: -40 ~ +85°C

存储温度 Storage Temperature: -55 ~ +125°C

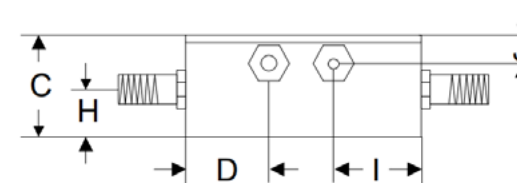
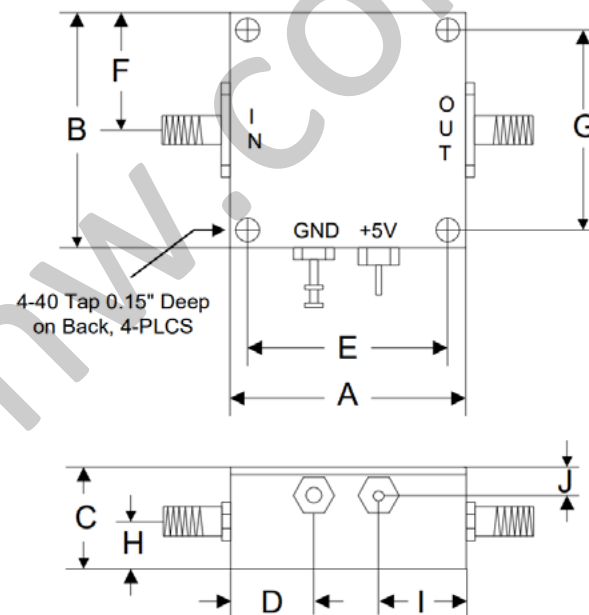
—机械技术参数 Mechanical Specifications—

输入连接器 Input Interface: SMA-F

输出连接器 Output Interface: SMA-F

尺寸 Size (excluding connectors): /

重量 Weight: /



	A	B	C	D	E	F	G	H	I	J
Inch	1.250	1.250	0.563	0.450	1.000	0.625	1.000	0.250	0.500	0.187
mm	31.75	31.75	14.29	11.43	25.40	15.88	25.40	6.35	12.70	4.76

UNLESS OTHERWISE SPECIFIED DIMENSIONS ARE MILLIMETER TOLERANCES ARE: DECIMALS ANGLES FRACTIONS .X±0.1 ±1' ±2/5 .XX±0.03 .XXX±0.012		莱尔微波 Laird Microwave www.lairmw.com sales@lairmw.com		P/N: LAP-5050							
		Approvals	DATE	30 - 700MHz 功率放大器 Power Amplifier 增益 Gain 30dB							
HOLE DIAMETER .35 TO 3.20 3.21 TO 6.35 6.36 TO 12.70 12.71 TO 19.05 19.06 TO 25.40 25.41 TO 50.80	TOLERANCES +.05/-02 +.10/-03 +.15/-03 +.20/-03 +.25/-03 +.30/-03	DRWN	ENG	CHK	Q.A.	DATE	SCALE A3 3:2	CAGE NO	DWG NO.	REV 1	
							SCALE 3:2	UNIT mm	SHEET 1 OF 1		