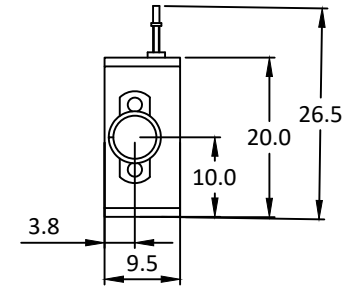
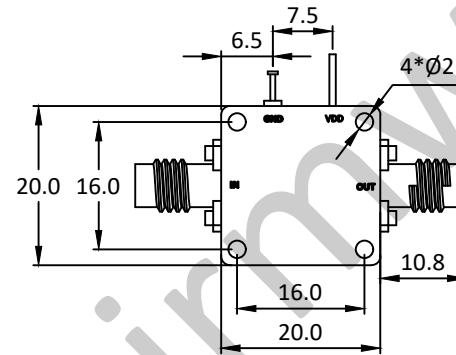
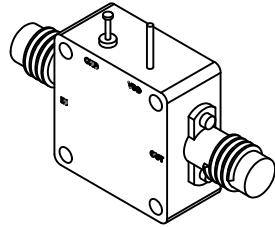


NOTES: UNLESS OTHERWISE SPECIFIED  
THIS IS A CAD GENERATED DRAWING, DO NOT REVISE MANUALLY

| REVISION HISTORY |     |                     |          |      |          |
|------------------|-----|---------------------|----------|------|----------|
| ZONE             | REV | DESCRIPTION         | E.C.O.NO | DATE | APPROVED |
|                  | 1   | ENGINEERING RELEASE |          |      |          |



## LAL-3010

1 - 18GHz 低噪声放大器 Low Noise Amplifier

### —电气技术参数Electrical Specifications—

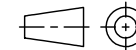
|                                 |            |
|---------------------------------|------------|
| 频率范围 Frequency Range:           | 1 - 18GHz  |
| 增益Gain:                         | 13dB       |
| 增益平坦度Gain Flatness:             | ±0.7dB     |
| 噪声系数 Noise Figure:              | 2.0dB      |
| 输出 $P_{1dB}$ Output $P_{1dB}$ : | 15dBm      |
| 输入驻波比Input VSWR:                | 8dB        |
| 输出驻波比Output VSWR:               | 10dB       |
| 直流偏置电压DC Supply Voltage:        | +5V        |
| 直流偏置电流DC Supply Current:        | 50mA       |
| 工作温度Operation Temperature:      | -40~+85°C  |
| 存储温度Storage Temperature:        | -55~+125°C |

### —机械技术参数Mechanical Specification—

|                               |       |
|-------------------------------|-------|
| 输入连接器Input Interface:         | SMA-F |
| 输出连接器Output Interface:        | SMA-F |
| 尺寸Size(excluding connectors): | /     |
| 重量Weight:                     | /     |

UNLESS OTHERWISE SPECIFIED  
DIMENSIONS ARE MILLIMETER  
TOLERANCES ARE:  
DECIMALS ANGLES FRACTIONS  
.X±0.1 ±1' ±2/5  
.XX±0.03  
.XXX±0.012

| HOLE DIAMETER  | TOLERANCES |
|----------------|------------|
| .35 TO 3.20    | +05/-02    |
| 3.21 TO 6.35   | +10/-03    |
| 6.36 TO 12.70  | +15/-03    |
| 12.71 TO 19.05 | +20/-03    |
| 19.06 TO 25.40 | +25/-03    |
| 25.41 TO 50.80 | +30/-03    |



Approvals

DATE

DRWN

ENG

CHK

Q.A.



www.lairmw.com sales@lairmw.com

P/N: LAL-3010

1-18GHz 低噪声放大器 Low Noise Amplifier  
增益 Gain 13dB, 噪声系数 NF 2.0dB

| SIZE  | CAGE NO | DWG NO.      | REV |
|-------|---------|--------------|-----|
| A3    |         |              | 1   |
| SCALE | UNIT    | SHEET 1 OF 1 |     |
| 3:2   | mm      |              |     |