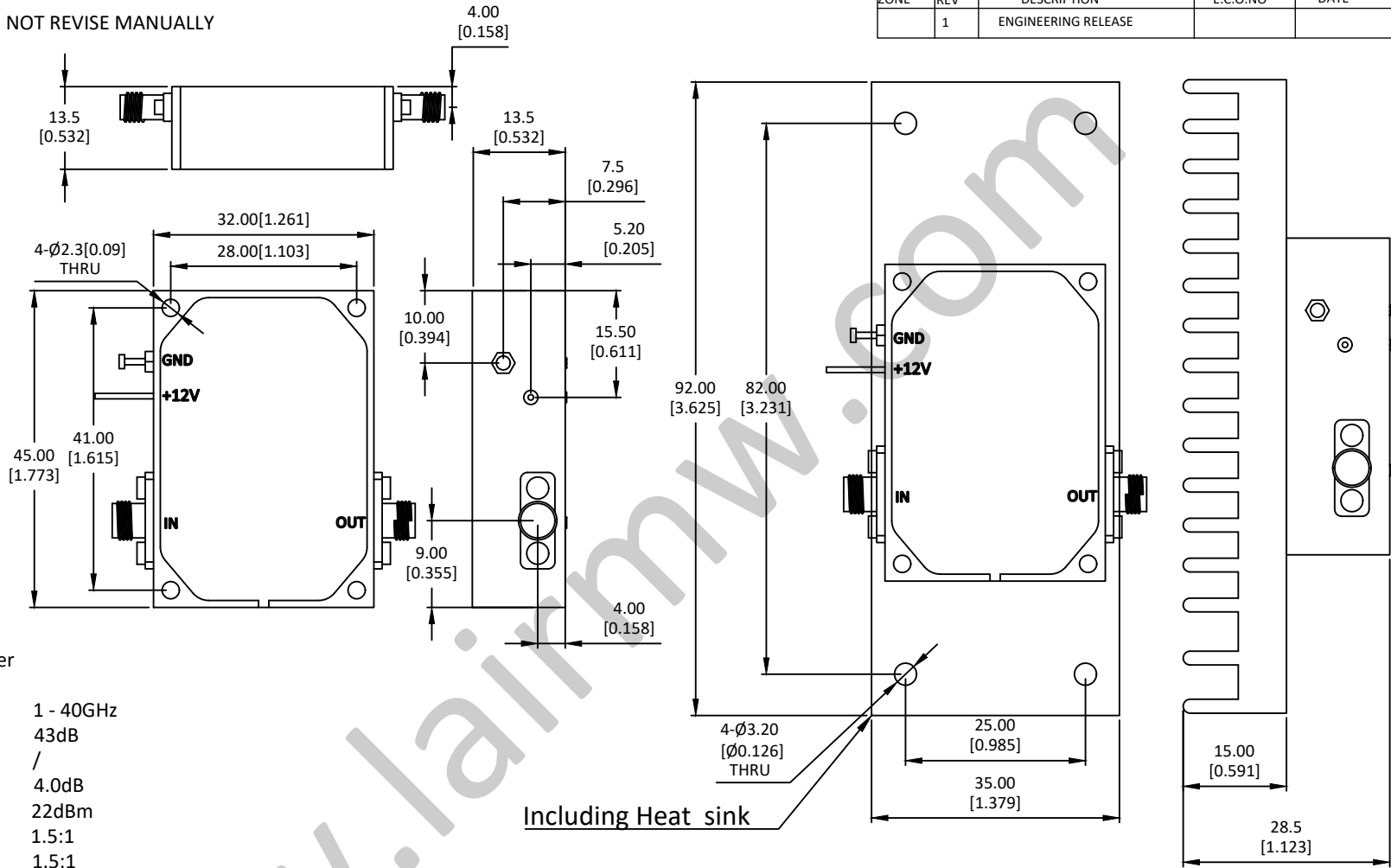
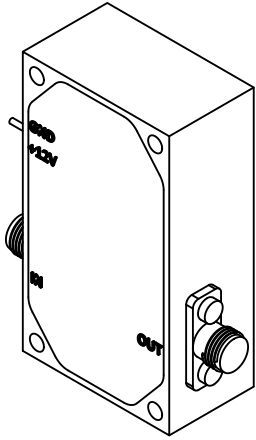


NOTES: UNLESS OTHERWISE SPECIFIED  
THIS IS A CAD GENERATED DRAWING, DO NOT REVISE MANUALLY

REVISION HISTORY					
ZONE	REV	DESCRIPTION	E.C.O.NO	DATE	APPROVED
	1	ENGINEERING RELEASE			



## LAL-1267

1~40GHz 低噪声放大器 Low Noise Amplifier

### —电气技术参数 Electrical Specifications—

频率范围 Frequency Range:	1 - 40GHz
增益 Gain:	43dB
增益平坦度 Gain Flatness:	/
噪声系数 Noise Figure:	4.0dB
输出 P <sub>1dB</sub> Output P <sub>1dB</sub> :	22dBm
输入驻波比 Input VSWR:	1.5:1
输出驻波比 Output VSWR:	1.5:1
直流偏置电压 DC Supply Voltage:	+12V
直流偏置电流 DC Supply Current:	500mA
工作温度 Operation Temperature:	-40~+85°C
存储温度 Storage Temperature:	-50~+105°C

### —机械技术参数 Mechanical Specification—

输入连接器 Input Interface:	2.92mm-F
输出连接器 Output Interface:	2.92mm-F
尺寸 Size (excluding connectors):	/
重量 Weight:	/

Including Heat sink

UNLESS OTHERWISE SPECIFIED DIMENSIONS ARE MILLIMETER TOLERANCES ARE: DECIMALS ANGLES FRACTIONS .XX±0.03 ±1' ±2/5 .XXX±0.012				P/N: LAL-1267																	
		www.lairmw.com sales@lairmw.com																			
		1-40GHz 低噪声放大器 Low Noise Amplifier 增益 Gain 43dB, 噪声系数 NF 4.0dB																			
		DRWN	DATE	SIZE A3	CAGE NO.	DWG NO.	REV 1														
<table border="1"> <tr> <th>HOLE DIAMETER</th> <th>TOLERANCES</th> </tr> <tr> <td>.35 TO 3.20</td> <td>+.05/-02</td> </tr> <tr> <td>3.21 TO 6.35</td> <td>+.10/-03</td> </tr> <tr> <td>6.36 TO 12.70</td> <td>+.15/-03</td> </tr> <tr> <td>12.71 TO 19.05</td> <td>+.20/-03</td> </tr> <tr> <td>19.06 TO 25.40</td> <td>+.25/-03</td> </tr> <tr> <td>25.41 TO 50.80</td> <td>+.30/-03</td> </tr> </table>		HOLE DIAMETER	TOLERANCES	.35 TO 3.20	+.05/-02	3.21 TO 6.35	+.10/-03	6.36 TO 12.70	+.15/-03	12.71 TO 19.05	+.20/-03	19.06 TO 25.40	+.25/-03	25.41 TO 50.80	+.30/-03	CHK		SCALE 3:2	UNIT mm	SHEET 1 OF 1	
HOLE DIAMETER	TOLERANCES																				
.35 TO 3.20	+.05/-02																				
3.21 TO 6.35	+.10/-03																				
6.36 TO 12.70	+.15/-03																				
12.71 TO 19.05	+.20/-03																				
19.06 TO 25.40	+.25/-03																				
25.41 TO 50.80	+.30/-03																				
		Q.A.																			